



- ✓ **24 HR. SERVICE GUARANTEE**
- ✓ **FULL SYSTEM INTEGRATOR**
- ✓ **UNMATCHED EXPERTISE**

## **3D CONTROL SYSTEMS**

- **MILLING**
- **ASPHALT PAVING**
- **CONCRETE PAVING**
- **CURB & GUTTER**
- **PILING**
- **MACHINE RETROFIT**



**Leica**  
Authorized Distributor



**Leica**  
Authorized Distributor

## MILLING 3D ROBOTIC



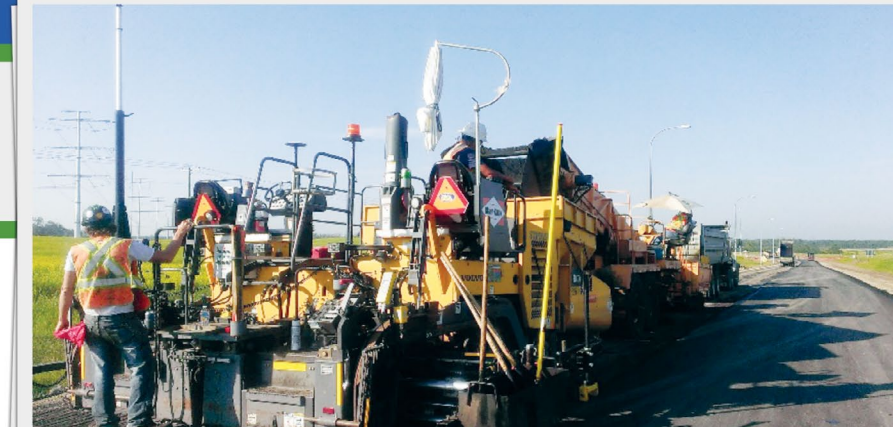
A long-lasting road begins with a smooth and solid foundation. Traditional profile milling is a complex process that requires extensive pre-survey and adjustments on the fly. The sheer complexity can cause a high level of stress, lead to mistakes with over-milling/paving, and ultimately, higher costs. The Leica 3D milling system helps to alleviate these issues and advance the industry's performance expectations.

### BASIC COMPONENTS:

- 1 MPC, PaveSmart 3D
- 1 Total Station to Track Machine, Extras for Leapfrogging
- 1 Dual Axis Slope Sensor
- 1 Machine Prism

### BENEFITS / RETURN ON INVESTMENT:

- Profile to Design
- Effortless Transitions
- Consistent Base = Better Paving Tolerance Control
- Fast Slope Adjustments, No Lag
- Safe and Open Work Area



- ✓ 24 HR. SERVICE GUARANTEE
- ✓ FULL SYSTEM INTEGRATOR
- ✓ UNMATCHED EXPERTISE

## ASPHALT PAVING 3D ROBOTIC

The Leica 3D control system will help transform the way you pave. No longer are you tethered to a stringline, stake and all the added real estate necessary to traditionally pave. The 3D control system simplifies the process by comparing the design model grade and position. It monitors and adjusts the alignment and elevation for precise paving. The 3D system also monitors and documents the compaction process while at the same time, improving the compaction quality and reducing operational costs.

### BASIC COMPONENTS:

- 1 MPC, PaveSmart 3D
- 1 Total Station to Track Machine, Extras for Leapfrogging
- 1 Dual Axis Slope Sensor
- 1 Machine Prism

### BENEFITS / RETURN ON INVESTMENT:

- Simple and Easy Slope Control
- Accurate Lift or Layer Placement
- Consistent Base = Better Paving
- Time Management / Logistically
- Safe and Open Work Area





**Leica**  
Authorized Distributor

## CONCRETE PAVING 3D ROBOTIC



Standard stringlines can be cumbersome to work with and sometimes cause the worksite to be cluttered. Leica's 3D paving technology provides equal to or better performance over the standard stringline methodology for both old and new pavers. You can save time, money and increase job site performance by switching to the Leica 3D control system.

### BASIC COMPONENTS:

- 1 MPC, PaveSmart 3D
- 2 Total Stations to Track Machine, Extras for Leapfrogging
- 2 Dual Axis Slope Sensors
- 2 Machine Prisms

### BENEFITS / RETURN ON INVESTMENT:

- Improve Yield and Decrease Waste
- Faster Job / Machine Setup
- Limit Survey Costs (No String Setup)
- Safe and Open Work Area
- Labor Savings
- Equal to OR Better Accuracy vs Stringline Control
- Safe and Open Work Area



While standard stake and string are still commonly used in the curb and gutter industry, 3D Robotic/GPS control systems are steadily growing in popularity. The Leica 3D control system typically interfaces very easily with standard machinery (some can even simply plug and play). The precise measurements allow for better curvatures that are more cost-effective to produce.

- ✓ 24 HR. SERVICE GUARANTEE
- ✓ FULL SYSTEM INTEGRATOR
- ✓ UNMATCHED EXPERTISE

## C&G 3D ROBOTIC GPS HEADING

### BASIC COMPONENTS:

- 1 MPC, PaveSmart 3D
- 1 or 2 Total Station(s) to Track Machine, Extras for Leapfrogging
- 1 GPS Antenna
- 1 Dual Axis Slope Sensor
- 1 Machine Prism

### BENEFITS / RETURN ON INVESTMENT:

- No Jobsite Calibration Required
- Design, Build, & Adjust on the Fly
- Clean Radius Control
- Simple Flow Line Adjustments
- Fast Setup Time
- Safe and Open Work Area





**Leica**  
Authorized Distributor



## PILING - GPS

What was once a very manual process that required trial and error, marking and staking, can now be as easy as inputting a CAD drawing and pressing a button. Leica's 3D GPS system allows for precise positioning and navigation. You will save time, money, create a safer work environment and see additional benefits.

### BASIC COMPONENTS:

- 1 HMI, iCON Piling
- 2 GPS Antennas to Track Machine
- 1 GPS Receiver
- 1 GPS Base Setup
- 1 Flores Automation Retro

### BENEFITS / RETURN ON INVESTMENT:

- Faster Navigation Between Piles
- Consistent Positioning
- Consistent Tolerance Control
- Limit Survey Costs (No Stake-Out)
- Less Operator Dependent
- Safe and Open Work Area



## MACHINE RETROFIT

Have you ever wanted to upgrade your equipment but thought it was out of date or too costly? FAMC will retrofit your old and not-so-old machinery with the latest in 3D control technology and help train your team on its proper usage. Leica total stations or GPS replace the stringlines and precisely track the machine's position and elevation. PaveSmart 3D then administers steering and elevation corrections through the retrofit controller.

- ✓ 24 HR. SERVICE GUARANTEE
- ✓ FULL SYSTEM INTEGRATOR
- ✓ UNMATCHED EXPERTISE

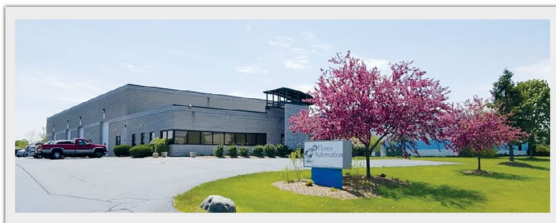
### THIS UPGRADE HELPS WITH THE FOLLOWING:

- Save Time and Money
- Advance Technology, Within Budget
- Extremely High Degree of Accuracy
- Improvement of Existing Road Profiles
- Increased Safety
- Reduces Site Obstructions



- ✓ **24 HR. SERVICE GUARANTEE**
- ✓ **FULL SYSTEM INTEGRATOR**
- ✓ **UNMATCHED EXPERTISE**

*Leica*  
Authorized Distributor



S84 W18693 Enterprise Dr  
Muskego, WI 53150

**Phone:** 262.682.4229

**Email:** [service@floresautomation-mc.com](mailto:service@floresautomation-mc.com)

**Web:** [floresautmatomation-mc.com](http://floresautmatomation-mc.com)

**Flores Automation & Machine Control** is a full-service distributor, integrator and US dealer of Leica 3D paving control systems. We don't just sell the product, we take a holistic approach when working with you and your paving needs to ensure we surpass your expectations.

Service is our #1 priority. FAMC is obsessed with surpassing your expectations and providing you with a smarter solution. We offer a 24 hr. service guarantee which means we provide 24 hr. phone support or if it is something more serious, will either be on our way or at your facility within 24 hours.

Before you begin your next new project, call 262.682.4229 or email us at [service@floresautomation-mc.com](mailto:service@floresautomation-mc.com) to talk with an expert engineer. Learn how FAMC can help you keep the job site safer and save you money.

